

MMM Double Degree Programs

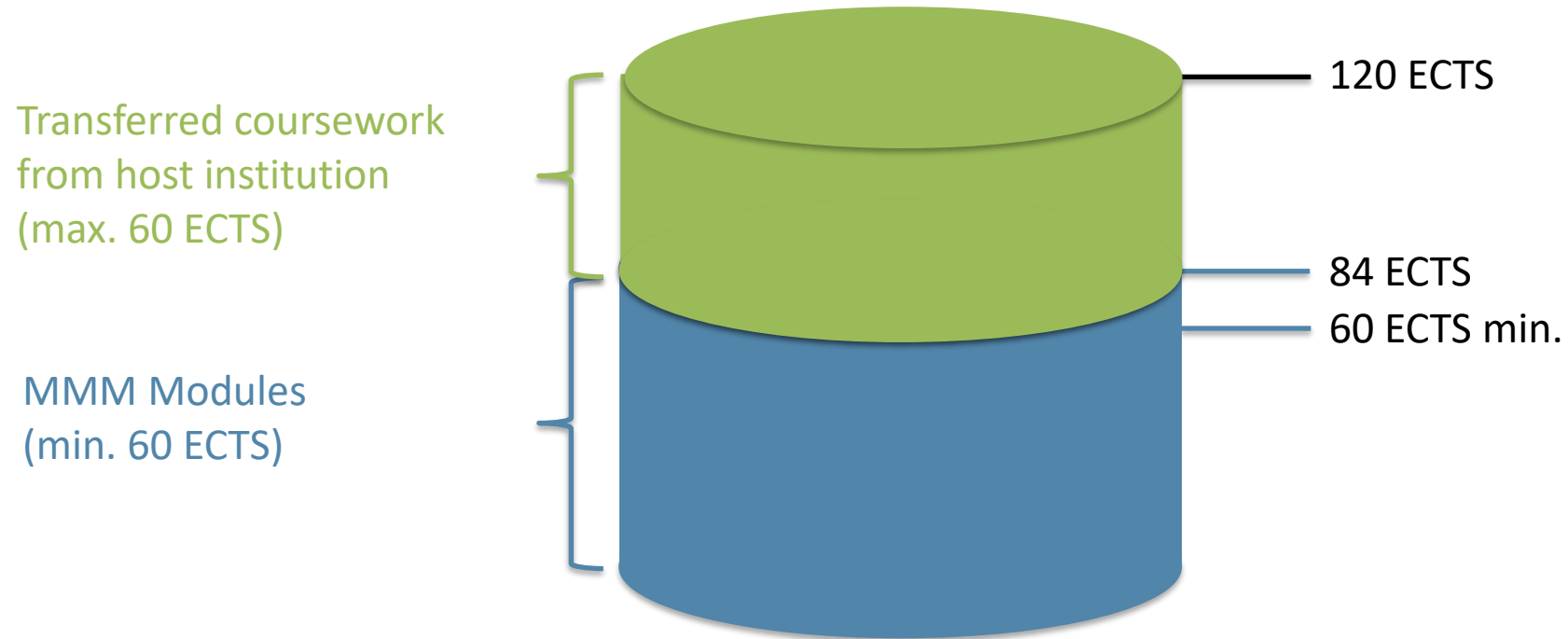
Info Session



What to expect of a Double Degree

- Earn two separate degrees from two renowned institutions
- Become fully immersed in another culture and country
- Experience two academic systems and different teaching styles
- No tuition fee at partner universities, but administrative/book fees, higher cost of living in some countries, health insurance and travel expenses
- Boost your international network and career opportunities
- Being well-structured is crucial!

Double Degree – Credit Transfer



To make sure to fulfill the degree requirements at both schools, please consult the study plans on our website: <https://www.bwl.uni-mannheim.de/en/international/mmm/>

Our 8 Partner Schools



Join the MMM course on ILIAS:
https://ilias.uni-mannheim.de/goto.php?target=crs_748794&client_id=ILIAS

Go to Double Degree Programs/Outgoings and find information on equivalent courses and the partner institutions.

Structure and Time Frame

- **General Structure:** First year at the University of Mannheim and second year at the partner university

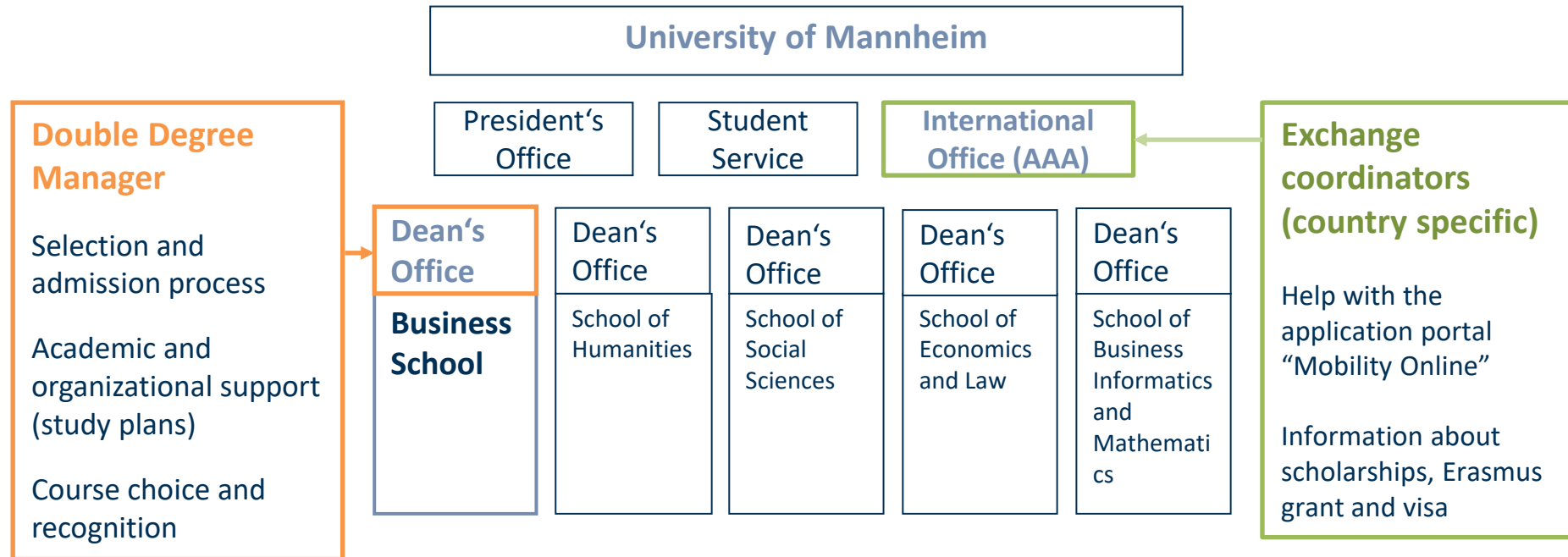
Months	Semester 1	Semester 2	Semester 3	Semester 4	(Semester 5*)
Location	Mannheim	Mannheim	Partner university	Partner university	(Mannheim)*

- **Queen’s program:**

Months	Semester 1	Semester 2	Semester 3	Semester 4	(Semester 5*)
Location	Mannheim	Mannheim	Queen’s	Queen’s or Mannheim	(Mannheim)*

*optional: 5th semester possible for Master’s thesis (approval by DD Manager)

Points of Contact



Application Process

Deadline: September 30, 2024

- Possible to apply for up to two double degree programs (one application/two letters of motivation and two study plans)
- Pre-selection and interviews: in October
- Final Decision: end of October
- In case of admission accept offer within 4 days on Mobility Online

Most important documents: Application guide & study regulations

Application Documents

1. Online application form, generated in the online application portal
2. CV (English)
3. Letter of motivation (English) /one per program
4. Study plan (preliminary) /one per program
5. Bachelor's degree certificate including individual grades
6. Proof of English proficiency
7. Optional: Language certificate for the local language at the partner institution (if different from English)
8. Optional: Other relevant certificates/ GMAT
9. Optional: Picture
10. Consolidated PDF file

Selection Criteria

- Personal and professional motivation and eligibility
- Academic performance
- Experience abroad
- Very good spoken and written English skills
- Practical experience
- Extra-curricular activities and social commitment
- Intercultural and social skills
- Additional language skills, especially in the language of instruction (if different from English)
- Formal correctness of the application

Regular Exchange Semester/EMT

- **Advice:** Apply for both the double degree program and a regular exchange semester/EMT (deadline October 31)
- Please note: If being accepted in the double degree program, application for regular exchange semester will not be considered any longer.
- Contact person for MMM **semester abroad:** Ms. Annabel Müller annabel.mueller@uni-mannheim.de, **Info Sessions on September 13**
- Contact person for **EMT:** Ms. Jennifer Thum jennifer.thum@uni-mannheim.de, **Info Session on September 20**

Financing

- Erasmus grant
- DAAD scholarship www.daad.de/go/stipd57503584
Deadline for some countries as early as September 30!
- Country specific funding
 - USA: Fulbright scholarship
- Baden Württemberg Scholarship
- BAföG Abroad

Please check the application procedure and deadlines asap!

More information: on the [International Office's Website](#).

We recommend to get in touch with the International Office's Study Abroad Team before applying for the scholarships.

How to get further information?

- Visit our **website**: <https://www.bwl.uni-mannheim.de/en/international/mmm/>
- Check out the **experience reports** of former double degree students
<https://www.uni-mannheim.de/en/academics/going-abroad/studying-abroad/partner-universities/>
- Send us an **email**: doubledegree.business@uni-mannheim.de or schedule an **online consultation**: <https://www.bwl.uni-mannheim.de/en/online-consultation/katharina-droeghoff/>
- Get in touch with **current and former double degree students**